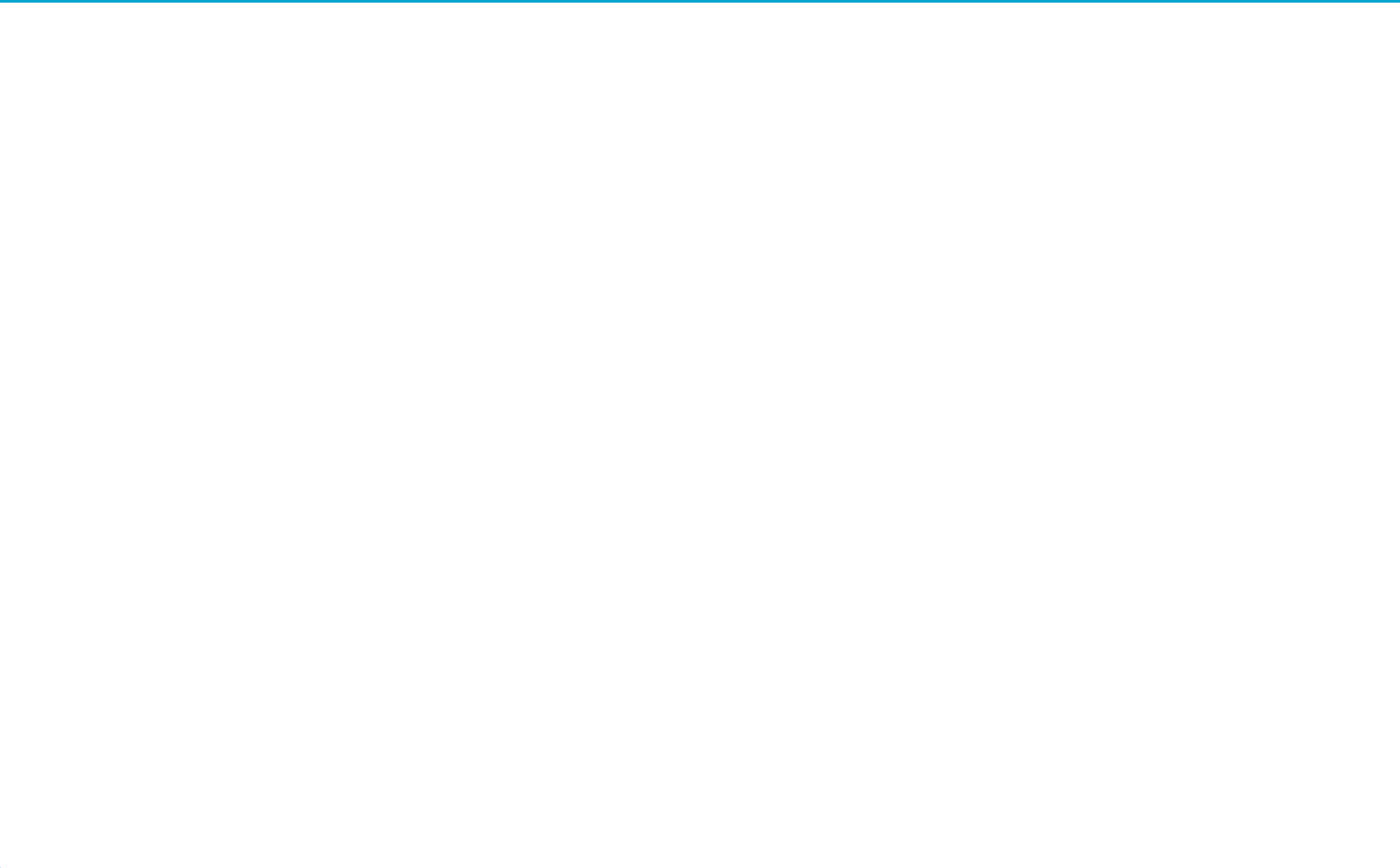
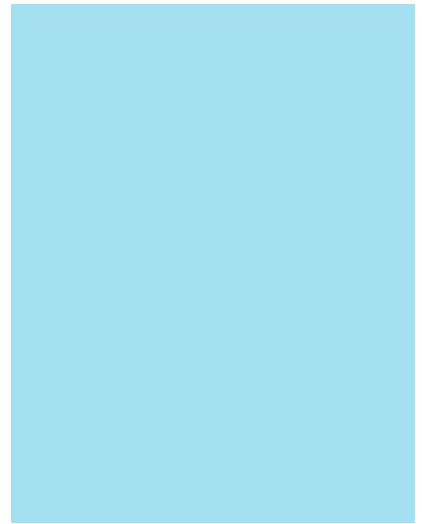


The economic impact of job losses relating to COVID-

On a national level, we anticipate the largest share of Americans who lose employer-provided health





References

- [1] <https://www.washingtonpost.com/business/2020/06/04/unemployment-claims-coronavirus/>
- [2] <https://www.k.org/coronavirus-covid-19/issue-brief/eligibility-for-aca-health-coverage-following-job-loss/>
- [3] <https://www.cbpp.org/research/health/policy-basics-introduction-to-medicaid>
- [4] https://health.oliverwyman.com/2020/04/is-there-a-new-normal-in-commercial-health-insurance-.html?utm_source=exacttarget&utm_medium=email&utm_content=2020-april-3_jobid_41790334&utm_campaign=ow-health-newsletter
- [5] <https://www.epi.org/blog/9-2-million-workers-likely-lost-their-employer-provided-health-insurance-in-the-past-four-weeks/>

Should you have any questions or would like to discuss this topic in more detail, please reach out to your Guy Carpenter representative or Ryan Keith at Ryan.Keith@guycarp.com

About Guy Carpenter

Guy Carpenter & Company, LLC is a leading global risk and reinsurance specialist with more than 3,100 professionals in over 60 offices around the world. Guy Carpenter delivers a powerful combination of broking expertise, trusted strategic advisory services and industry-leading analytics to help clients adapt to emerging opportunities and achieve profitable growth. Guy Carpenter is a business of Marsh & McLennan (NYSE: MMC), the world's leading professional services firm in the areas of risk, strategy and people. The company's 76,000 colleagues advise clients in over 130 countries. With annual revenue of \$17 billion, Marsh & McLennan helps clients navigate an increasingly dynamic and complex environment through four market-leading businesses including Marsh, Mercer and Oliver Wyman. For more information, visit www.guycarp.com and follow Guy Carpenter on LinkedIn and Twitter @GuyCarpenter.

Guy Carpenter & Company, LLC provides this report for general information only. The information contained herein is based on sources we believe reliable, but we do not guarantee its accuracy, and it should be understood to be general insurance/reinsurance information only. Guy Carpenter & Company, LLC makes no representations or warranties, express or implied. The information is not intended to be taken as advice with respect to any individual situation and cannot be relied upon as such. Statements concerning tax, accounting, legal or regulatory matters should be understood to be general observations based solely on our experience as reinsurance brokers and risk consultants, and may not be relied upon as tax, accounting, legal or regulatory advice, which we are not authorized to provide. All such matters should be reviewed with your own qualified advisors in these areas. Readers are cautioned not to place undue reliance on any historical, current or forward-looking statements. Guy Carpenter & Company, LLC undertakes no obligation to update or revise publicly any historical, current or forward-looking statements, whether as a result of new information, research, future events or otherwise. The trademarks and service marks contained herein are the property of their respective owners.